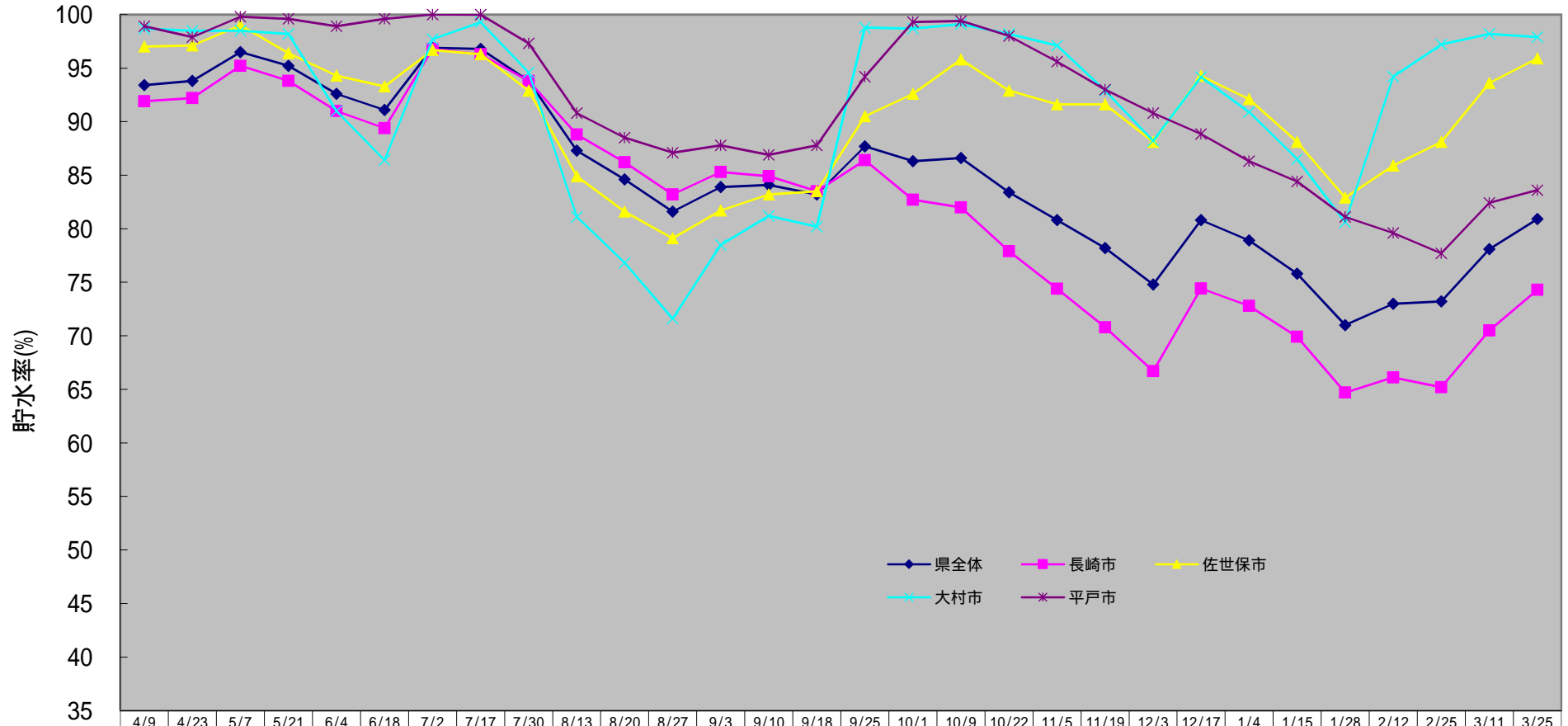


水道用ダム貯水率の推移(H30.4～)



	4/9	4/23	5/7	5/21	6/4	6/18	7/2	7/17	7/30	8/13	8/20	8/27	9/3	9/10	9/18	9/25	10/1	10/9	10/22	11/5	11/19	12/3	12/17	1/4	1/15	1/28	2/12	2/25	3/11	3/25
◆ 県全体	93.4	93.8	96.5	95.2	92.6	91.1	96.9	96.8	93.8	87.3	84.6	81.6	83.9	84.1	83.2	87.7	86.3	86.6	83.4	80.8	78.2	74.8	80.8	78.9	75.8	71.0	73.0	73.2	78.1	80.9
■ 長崎市	91.9	92.2	95.2	93.8	91.0	89.4	96.8	96.3	93.8	88.8	86.2	83.2	85.3	84.9	83.5	86.4	82.7	82.0	77.9	74.4	70.8	66.7	74.4	72.8	69.9	64.7	66.1	65.2	70.5	74.3
▲ 佐世保市	97.0	97.1	99.0	96.4	94.3	93.3	96.7	96.3	92.9	84.9	81.6	79.1	81.7	83.2	83.5	90.5	92.6	95.8	92.9	91.6	91.6	88.1	94.3	92.1	88.1	82.9	85.9	88.1	93.6	95.9
✧ 大村市	98.7	98.5	98.5	98.2	91.0	86.4	97.7	99.3	94.6	81.1	76.8	71.6	78.5	81.2	80.2	98.8	98.7	99.1	98.2	97.1	92.9	88.2	94.2	90.9	86.5	80.6	94.2	97.2	98.2	97.9
✳ 平戸市	98.9	97.9	99.8	99.6	98.9	99.6	100.0	100.0	97.3	90.8	88.5	87.1	87.8	86.9	87.8	94.2	99.3	99.4	98.0	95.6	93.0	90.8	88.9	86.3	84.4	81.1	79.6	77.7	82.4	83.6